

# Sterling Series Bellman's Cart

## Stainless Steel

There is no better way to impress your guests than with an attractive, well made bellman's cart. With its quiet pneumatic wheels and conveniently placed hanging pegs, the transporter will make a lasting first impression.

- Designed for elevator access
- Steel reinforced undercarriage and solid 1" plywood deck
- 1" diameter stainless steel tubing
- Stain resistant carpet
- Two rigid and two swivel 8" pneumatic wheels
- Wrap around bumpers (non-scuffing)
- Stainless steel hanging rod with conveniently placed hanging pegs



# PVBC03

**Wheel Options**

*Replacement Wheels (also sold separately)*



**Carpet/Bumper Options**



**Burgundy**  
Black

**Black**  
Black

**Gray**  
Gray

**Gray**  
Black

**Item #**  
PVBC03

**Color**  
Stainless Steel Finish

**WxHxL**  
25"W x 73"H x 43"L

# Sterling Series Bellman's Cart

## Brass Plated

There is no better way to impress your guests than with an attractive, well made bellman's cart. With its quiet pneumatic wheels and conveniently placed hanging pegs, the transporter will make a lasting first impression.

- Designed for elevator access
- Steel reinforced undercarriage and solid 1" plywood deck
- 1" diameter steel tubing
- Stain resistant carpet
- Two rigid and two swivel 8" pneumatic wheels
- Wrap around bumpers (non-scuffing)
- Hanging rod with conveniently placed hanging pegs



**Wheel Options**

*Replacement Wheels (also sold separately)*



**Carpet/Bumper Options**



**Item #**  
PVBC02

**Color**  
Brass Finish

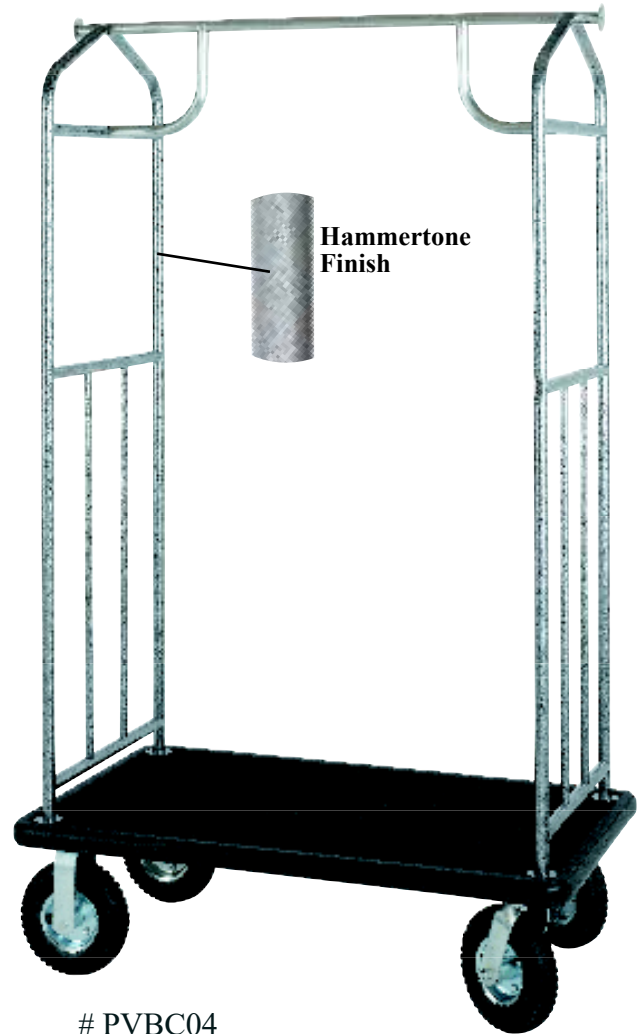
**WxHxL**  
25"W x 73"H x 43"L

# Sterling Series Bellman's Cart

## Hammertone

There is no better way to impress your guests than with an attractive, well made bellman's cart. With its quiet pneumatic wheels and conveniently placed hanging pegs, the transporter will make a lasting first impression.

- Designed for elevator access
- Steel reinforced undercarriage and solid 1" plywood deck
- 1" diameter steel tubing
- Stain resistant carpet
- Two rigid and two swivel 8" pneumatic wheels
- Wrap around bumpers (non-scuffing)
- Stainless steel hanging rod with conveniently placed hanging pegs



### Wheel Options

*Replacement Wheels (also sold separately)*



#NP4G8

#BCWHP8

### Carpet/Bumper Options



Burgundy  
Black

Black  
Black

Gray  
Gray

Gray  
Black

### Item #

PVBC04

### Color

Hammertone Finish

### WxHxL

25"W x 73"H x 43"L

# Sterling Series Bellman's Cart

## Chrome

There is no better way to impress your guests than with an attractive, well made bellman's cart. With its quiet pneumatic wheels and conveniently placed hanging pegs, the transporter will make a lasting first impression.

- Designed for elevator access
- Steel reinforced undercarriage and solid 1" plywood deck
- 1" diameter steel tubing
- Stain resistant carpet
- Two rigid and two swivel 8" pneumatic wheels
- Wrap around bumpers (non-scuffing)
- Stainless steel hanging rod with conveniently placed hanging pegs



### Wheel Options

*Replacement Wheels (also sold separately)*



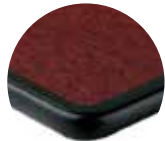
#NP4G8



#BCWHP8



### Carpet/Bumper Options



Burgundy  
Black



Black  
Black



Gray  
Gray



Gray  
Black

### Item #

PVBC01

### Color

Chrome Finish

### WxHxL

25"W x 73"H x 43"L

## Utility Bellman's Cart Stainless Steel

From boxes to bags, this utility cart can make those difficult hallway trips so much easier. A great option for convention/meeting room properties. Keep bellman's carts in the lobby by adding a utility cart or two for the transport of meeting materials.



# PVUC01

- 1½" Steel tubing for strength and durability
- Gray carpet/gray bumper deck
- Stainless steel handles and foot rails add extra security during transport
- 6" fully pneumatic wheels

**Item #**  
PVUC01

**Color**  
Stainless Steel

**WxHxD**  
25"W x 42"H x 43"D



# Coastal Utility Bellman's Cart

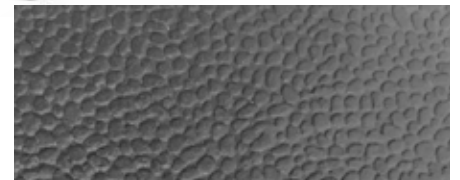
From boxes to bags, this utility cart can make those difficult hallway trips so much easier. A great option for convention/meeting room properties. Coated finish allows versatility for any type of property. Ships in one box to save on shipping and warehousing costs!

- Designed for elevator access
- 2" diameter steel tubing- featuring rust resistant coating
- Black rubber matting, steel deck - wears well; stain and rust resistant
- Two rigid and two swivel 5" semi-pneumatic wheels with black casters
- Wrap around bumpers (non-scuffing)
- Reinforced deck with metal couplings ensure added frame stability
- Carton dimensions: 44" x 27" x 8"; 50#

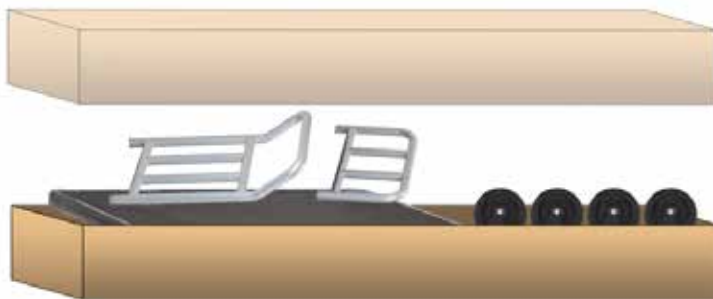


#PVUCC

The All-In-One Series Bellman's Cart ships in one carton saving on shipping and warehousing costs.



Textured deck for extra durability



*\*Heavy duty shipping carton includes one complete unassembled bellman's cart. Carton contents include one frame, one deck, and four 5" semi-pneumatic wheels, assembly hardware and tools*

Item #  
PVUCC

Color  
Rust Resistant Finish/  
Black Textured Rubber Matting/  
Black Bumper

WxHxL  
24.75"W x 37"H x 42"L

# Nesting Compact

## Luggage Carrier

This three wheel compact carrier is a great item to help guests traveling light who would not normally use a larger bellman's cart. Innovative design allows multiple carts to be nested to save space. Easily transports a small to medium bag or two and a lightweight garment bag.



- Constructed of 1" tubular brushed stainless steel
- Features convenient hanging rod
- Back wheels are 8" semi-pneumatic wheels with non-marking grey tires
- Easy to maneuver; compact for storage in small places

**Item #**

PVNLC

**Color**

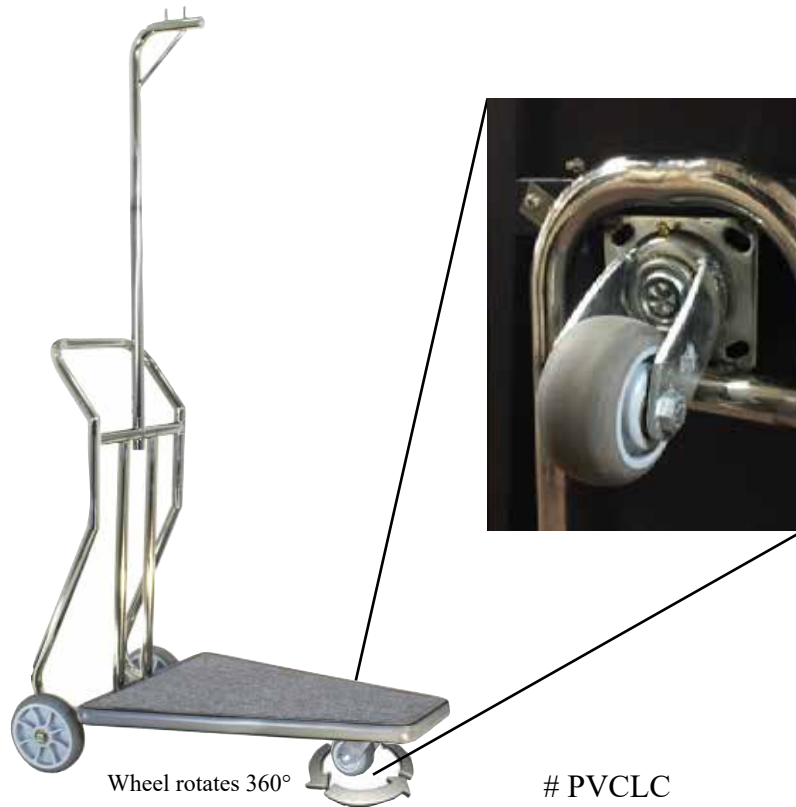
Brushed Stainless steel/  
grey carpet and bumper

**WxL**

30.5"x 41"x 76"

# Compact Luggage Carrier

This three wheel compact carrier is a great item to help guests traveling light who would not normally use a larger bellman's cart. Easily transports a small to medium bag or two and a lightweight garment bag.



- Constructed of 1" tubular brushed stainless steel
- Features convenient hanging rod
- Back wheels are 8" semi-pneumatic wheels with non-marking grey tires
- Easy to maneuver; compact for storage in small places

**Item #**

PVCLC

**Color**

Brushed Stainless steel/  
grey carpet and bumper

**WxL**

25"x 41"x 71"